



WORK AREA 4

- LEGEND**
- = WORK AREA
 - = CHANNELIZING DEVICE
 - = ARROW PANEL
 - = LANE IDENTIFICATION
 - = VARIABLE MESSAGE BOARD

REFER TO FDOT INDEX NUMBER 102-613

SPEED LIMIT ON N TAMiami TRL IS 40 MPH

E/B 17TH ST TO REMAIN OPEN

NORTH TAMiami TRAIL
AC WM REPLACEMENT



DETAIL A

200' FT

RIGHT LANE CLOSED AHEAD

200' FT

RIGHT SHOULDER CLOSED

200' FT

SPEEDING FINES DOUBLED WHEN WORKERS PRESENT

200' FT

ROAD WORK AHEAD

PANEL 1 **PANEL 2**

LEFT LN CLOSED AHEAD

MERGE RIGHT

TEMPORARY TRAFFIC CONTROL SHALL COMPLY WITH THE CURRENT EDITION OF THE FDOT DESIGN STANDARDS (102-600 SERIES INDEX NUMBERS) AND MANUAL ON UNIFORM TRAFFIC CONTROL DEVICES (MUTCD).

MOT provided by:
Bob's BARRICADES, INC.
COMPLETE WORKSITE TRAFFIC CONTROL

FDOT

This Certifies that
CAMERON BERGER

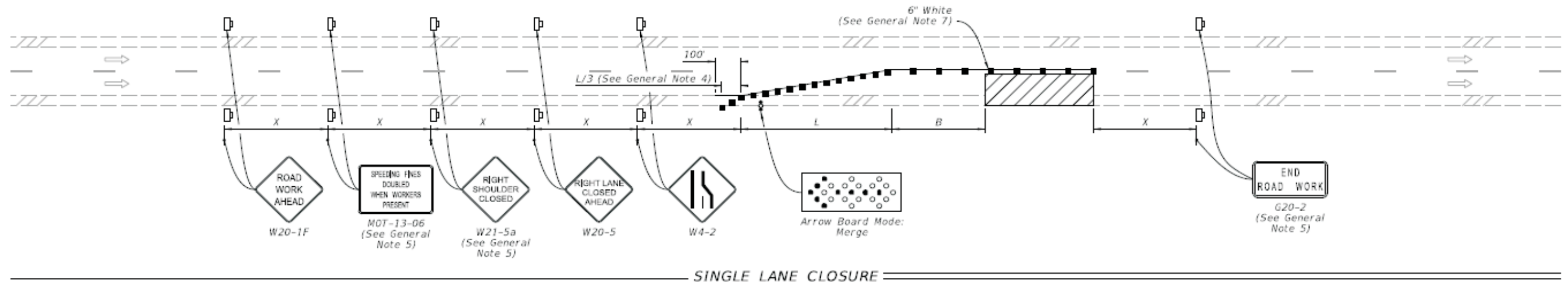
Has Completed a Florida Department of Transportation Approved Temporary Traffic Control (TTC) Advanced (Refresher) Course.

Date Expires: 08/20/2025 Certificate # 76723
Instructor: Ronald C. Appel FDOT Provider # 134

A&SW Consultants, Inc.
Phone: 386-788-9899
5545 Benchmark Lane
Sanford, FL 32773
www.FloridaMOT.com
nicolle@aswconsultants.com

A&SW
Consultants, Inc.

9/10/2024 11:05:10 AM



SYMBOLS:

- Work Area
- Channelizing Device (See Index 102-600)
- Work Zone Sign
- Arrow Board
- Lane Identification and Direction of Traffic

GENERAL NOTE:

1. L = Taper Length
B = Buffer Length
X = Work Zone Sign Distance
See Index 102-600 for "L", "B", "X", and channelizing device spacing values.
2. On undivided highways the median signs as shown are to be omitted.
3. On limited access facilities, omit "Right Shoulder Closed" signs (W21-5a) and associated work zone sign spacing distances.
4. If the paved shoulder is less than 4' in width, omit the taper and channelizing devices from the paved shoulder.
5. The "Speeding Fines Doubled When Workers Present" signs (MOT-13-06) and "End Road Work" signs (G20-2) and "Right Shoulder Closed" (W21-5a), along with associated work zone sign distances, may be omitted when the work operation will be in place for 24 hours or less. For Single Lane Closures, arrow boards and buffer (B) may also be omitted when the work operation will be in place for 60 minutes or less and the speed limit is 45 mph or less.
6. Use inverted plan of the illustrations for work on left side of roadways.
7. Temporary pavement markings may be omitted when the work operation is in place for 3 days or less.

LAST
REVISION
11/01/21

REVISION

DESCRIPTION:



FY 2025-26
STANDARD PLANS

MULTILANE ROADWAY, LANE CLOSURES

INDEX
102-613

SHEET
1 of 5

SHEET	TABLE OF CONTENTS
1	General Notes, TTC Tables
2	Definitions Temporary Traffic Control Devices Overhead Work Railroads Sight Distance Above Ground Hazard
3	Clear Zone Widths For Work Zones Superelevation Length Of Lane Closures Overweight/Oversize Vehicles Lane Widths High-Visibility Safety Apparel Speed Reduction Signing
4	Flagger Control Survey Work Zones Signs
5	Work Zone Sign Supports
6	Commonly Used Warning and Regulatory Signs In Work Zones
7	Manholes/Crosswalks/Joints Truck Mounted Attenuators Signals Channelizing Devices Channelizing Devices Consistency Advanced Warning Arrow Boards
8	Drop-Offs In Work Zones
9	Business Entrance Temporary Asphalt Separator
10	Channelizing Devices Notes Temporary Barrier Notes
11	Pavement Markings

GENERAL NOTES:

1. This Index contains information specific to the Federal and State guidelines and standards for the preparation of traffic control plans and for the execution of traffic control in work zones, for construction and maintenance operations and utility work on highways, roads and streets on the State Highway System. Certain requirements in this Index are based on the high volume nature of State Highways. For highways, roads and streets off the State Highway System, the local agency (City/County) having jurisdiction may adopt requirements based on the minimum requirements provided in the MUTCD.
2. Use this Index in accordance with the Plans and Indexes 102-601 through 102-680. Indexes 102-601 through 102-680 are Department-specific typical applications of commonly encountered situations. Adjust device location or number thereof as recommended by the Worksite Traffic Supervisor and approved by the Engineer. Devices include, but are not limited to, flaggers, portable temporary signals, signs, pavement markings, and channelizing devices. Comply with MUTCD or applicable Department criteria for any changes and document the reason for the change.
3. Except for emergencies, any road closure on State Highway System must comply with Section 335.15, F.S.

TABLE 1 CHANNELIZING DEVICE SPACING				
Work Zone Speed (mph)	Max. Spacing (feet)			
	Cones or Temporary Tubular Markers		Type I Barricades, Type II Barricades, Vertical Panels, or Drums	
	Taper	Tangent	Taper	Tangent
≤ 45	25	50	25	50
≥ 50	25	50	50	100

TABLE 2 TAPER LENGTH "L"	
Work Zone Speed (mph)	Min. Length (feet)
≤ 40	$L = \frac{WS^2}{60}$
≥ 45	$L = WS$
Where: W = width of offset in feet S = speed in mph	

TABLE 3 WORK ZONE SIGN SPACING "X"	
Road Type	Min. Spacing (feet)
Arterials and Collectors with Work Zone Speed ≤ 40 mph	200
Arterials and Collectors with Work Zone Speed ≥ 45 mph	500
Limited Access Roadways *	1,500
* For Limited access roadways with work zone speed ≤ 55 mph, the minimum spacing may be reduced in accordance with the MUTCD and as approved by the Engineer.	

TABLE 4 BUFFER LENGTH "B"	
Work Zone Speed (mph)	Min. Length (feet)
25	155
30	200
35	250
40	305
45	360
50	425
55	495
60	570
65	645
70	730
Note: When Buffer Length "B" cannot be attained due to geometric constraints, use the greatest length possible, but not less than 155 feet.	

SYMBOLS:

-  Work Area
-  Channelizing Device
-  Work Zone Sign
-  Type III Barricade
-  Lane Identification and Direction of Traffic