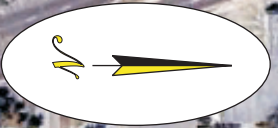
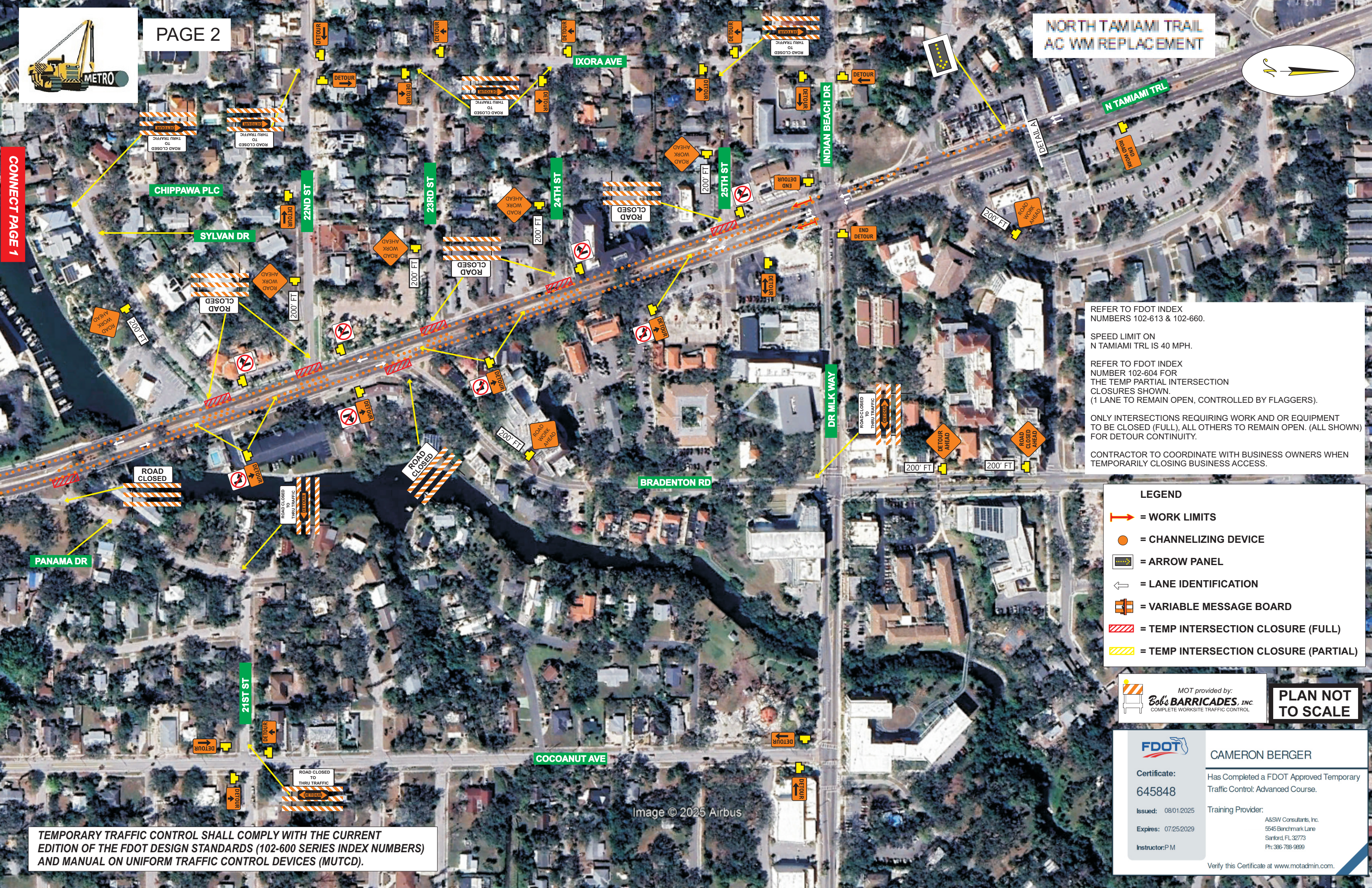




NORTH TAMiami TRAIL AG WM REPLACEMENT



CONNECT PAGE 1



REFER TO FDOT INDEX NUMBERS 102-613 & 102-660.

SPEED LIMIT ON N TAMiami TRAIL IS 40 MPH.

REFER TO FDOT INDEX NUMBER 102-604 FOR THE TEMP PARTIAL INTERSECTION CLOSURES SHOWN. (1 LANE TO REMAIN OPEN, CONTROLLED BY FLAGGERS).

ONLY INTERSECTIONS REQUIRING WORK AND OR EQUIPMENT TO BE CLOSED (FULL), ALL OTHERS TO REMAIN OPEN. (ALL SHOWN FOR DETOUR CONTINUITY).

CONTRACTOR TO COORDINATE WITH BUSINESS OWNERS WHEN TEMPORARILY CLOSING BUSINESS ACCESS.

LEGEND

- = WORK LIMITS
- = CHANNELIZING DEVICE
- = ARROW PANEL
- = LANE IDENTIFICATION
- = VARIABLE MESSAGE BOARD
- = TEMP INTERSECTION CLOSURE (FULL)
- = TEMP INTERSECTION CLOSURE (PARTIAL)

MOT provided by:
Bob's BARRICADES, INC.
COMPLETE WORKSITE TRAFFIC CONTROL

PLAN NOT TO SCALE

FDOT CAMERON BERGER

Certificate: 645848
Has Completed a FDOT Approved Temporary Traffic Control: Advanced Course.

Issued: 08/01/2025
Expires: 07/25/2029

Training Provider: A&S Consultants, Inc.
5545 Benchmark Lane
Sanford, FL 32773
Ph: 386-788-9899

Instructor: P M

Verify this Certificate at www.motadmin.com.

TEMPORARY TRAFFIC CONTROL SHALL COMPLY WITH THE CURRENT EDITION OF THE FDOT DESIGN STANDARDS (102-600 SERIES INDEX NUMBERS) AND MANUAL ON UNIFORM TRAFFIC CONTROL DEVICES (MUTCD).



NORTH TAMiami TRAIL AG WM REPLACEMENT

REFER TO FDOT INDEX
NUMBERS 102-613 & 102-660.

SPEED LIMIT ON
N TAMiami TRL IS 40 MPH.

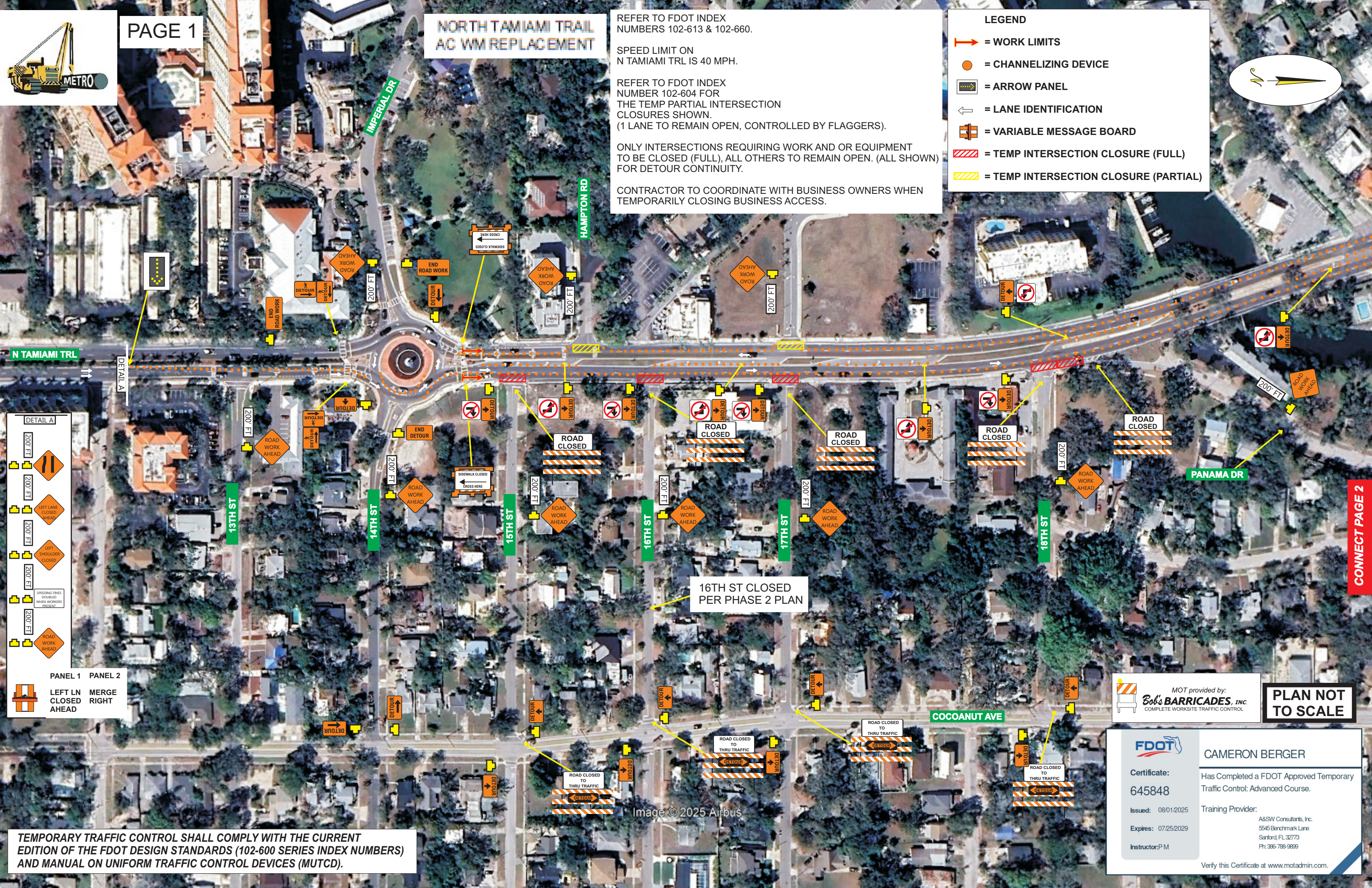
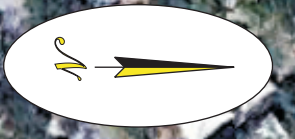
REFER TO FDOT INDEX
NUMBER 102-604 FOR
THE TEMP PARTIAL INTERSECTION
CLOSURES SHOWN.
(1 LANE TO REMAIN OPEN, CONTROLLED BY FLAGGERS).

ONLY INTERSECTIONS REQUIRING WORK AND OR EQUIPMENT
TO BE CLOSED (FULL), ALL OTHERS TO REMAIN OPEN. (ALL SHOWN)
FOR DETOUR CONTINUITY.

CONTRACTOR TO COORDINATE WITH BUSINESS OWNERS WHEN
TEMPORARILY CLOSING BUSINESS ACCESS.

LEGEND

- = WORK LIMITS
- = CHANNELIZING DEVICE
- = ARROW PANEL
- = LANE IDENTIFICATION
- = VARIABLE MESSAGE BOARD
- = TEMP INTERSECTION CLOSURE (FULL)
- = TEMP INTERSECTION CLOSURE (PARTIAL)



DETAIL A

- 200 FT ROAD WORK AHEAD
- 200 FT LEFT LANE CLOSED AHEAD
- 200 FT LEFT SHOULDER CLOSED
- 200 FT SPEEDING FINES DOUBLED WHEN WORKERS PRESENT
- 200 FT ROAD WORK AHEAD

PANEL 1 **PANEL 2**

- LEFT LN CLOSED AHEAD
- MERGE RIGHT

CONNECT PAGE 2

MOT provided by:
Bob's BARRICADES, INC.
COMPLETE WORKSITE TRAFFIC CONTROL

PLAN NOT TO SCALE

FDOT CAMERON BERGER

Certificate: 645848
Issued: 08/01/2025
Expires: 07/25/2029
Instructor: P M

Has Completed a FDOT Approved Temporary Traffic Control: Advanced Course.
Training Provider: A&SW Consultants, Inc.
5545 Benchmark Lane
Sanford, FL 32773
Ph: 386-788-9899

Verify this Certificate at www.motadmin.com.

TEMPORARY TRAFFIC CONTROL SHALL COMPLY WITH THE CURRENT EDITION OF THE FDOT DESIGN STANDARDS (102-600 SERIES INDEX NUMBERS) AND MANUAL ON UNIFORM TRAFFIC CONTROL DEVICES (MUTCD).

Image © 2025 Airbus