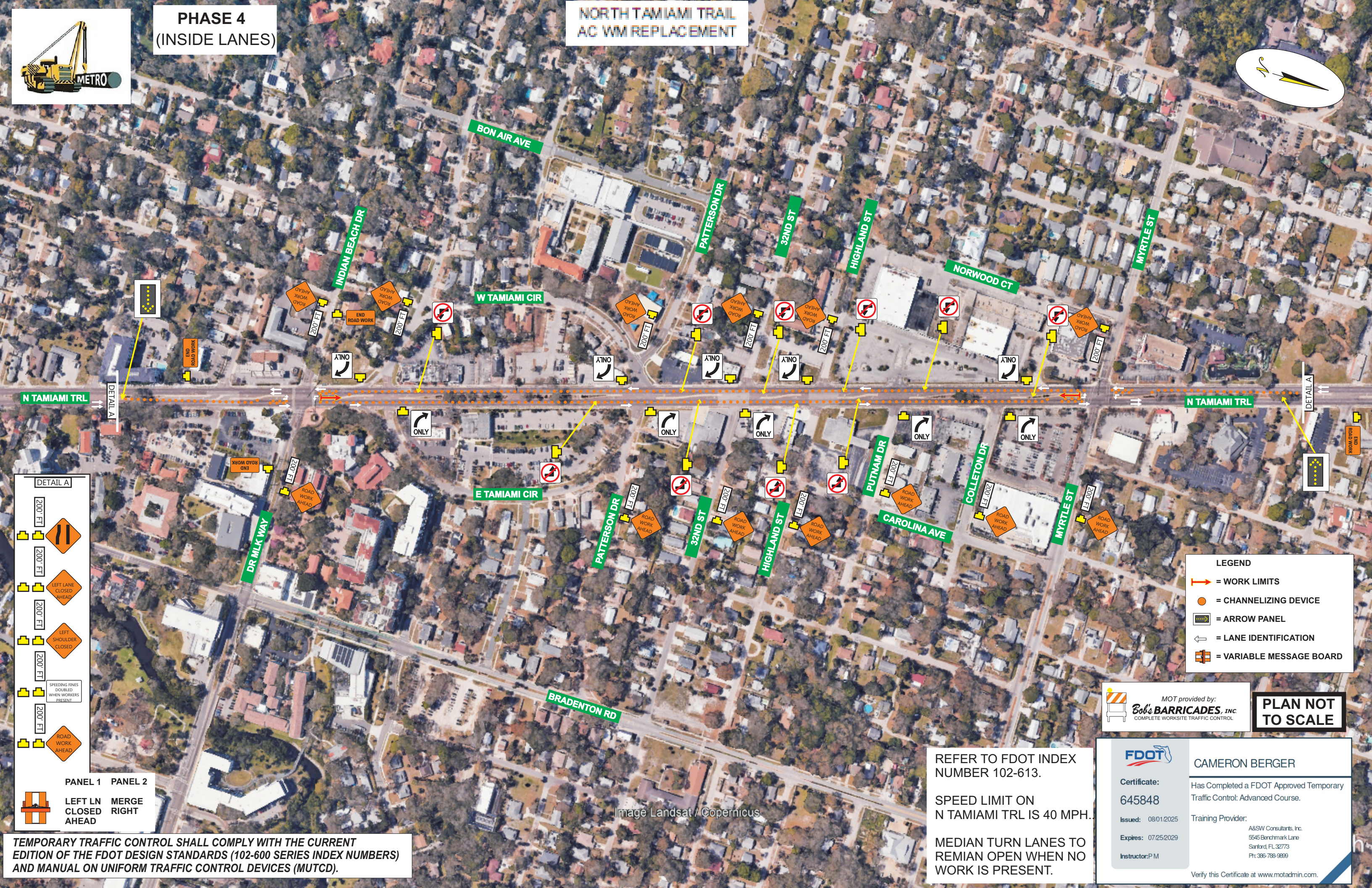
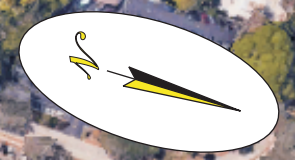




# PHASE 4 (INSIDE LANES)

# NORTH TAMiami TRAIL AC WM REPLACEMENT



**DETAIL A**

- 200 FT [Symbol]
- 200 FT [Symbol]
- 200 FT [Symbol]
- 200 FT [Symbol]
- 200 FT [Symbol]
- 200 FT [Symbol]
- 200 FT [Symbol]

**PANEL 1** LEFT LN CLOSED AHEAD

**PANEL 2** MERGE RIGHT AHEAD

**LEGEND**

- [Symbol] = WORK LIMITS
- [Symbol] = CHANNELIZING DEVICE
- [Symbol] = ARROW PANEL
- [Symbol] = LANE IDENTIFICATION
- [Symbol] = VARIABLE MESSAGE BOARD

MOT provided by:  
**Bob's BARRICADES, INC.**  
COMPLETE WORKSITE TRAFFIC CONTROL

**PLAN NOT TO SCALE**

REFER TO FDOT INDEX NUMBER 102-613.

SPEED LIMIT ON N TAMiami TRAIL IS 40 MPH.

MEDIAN TURN LANES TO REMAIN OPEN WHEN NO WORK IS PRESENT.

**FDOT**

**CAMERON BERGER**

Certificate: 645848

Issued: 08/01/2025

Expires: 07/25/2029

Instructor: P.M.

Has Completed a FDOT Approved Temporary Traffic Control: Advanced Course.

Training Provider: A&SW Consultants, Inc. 5545 Benchmark Lane Sanford, FL 32773 Ph: 386-788-9899

Verify this Certificate at [www.motadmin.com](http://www.motadmin.com).

TEMPORARY TRAFFIC CONTROL SHALL COMPLY WITH THE CURRENT EDITION OF THE FDOT DESIGN STANDARDS (102-600 SERIES INDEX NUMBERS) AND MANUAL ON UNIFORM TRAFFIC CONTROL DEVICES (MUTCD).

Image Landsat / Copernicus