

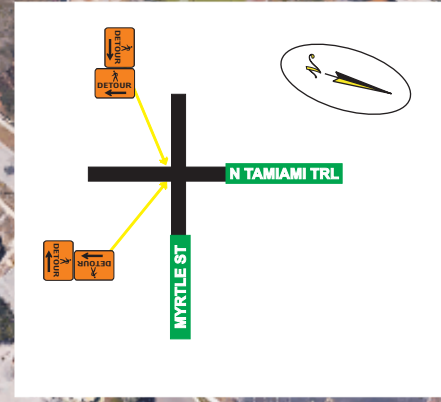
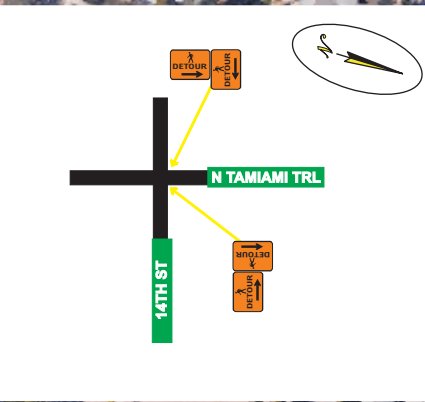


N TAMIAMI TRL & INDIAN BEACH DR INTERSECTION

PHASE 1 PAGE 1
(WORK AREA DETAIL)

SEE PAGE 2 FOR FULL
DETOUR ROUTE

NORTH TAMIAMI TRAIL AC WM REPLACEMENT



PANEL 1 PANEL 2
ROAD CLOSED AHEAD FOLLOW
DETOUR AHEAD

PANEL 1 PANEL 2
ROAD CLOSED AHEAD FOLLOW
DETOUR AHEAD

- DETAIL A
- 200' FT [Symbol]
 - 200' FT [Symbol]
 - 200' FT [Symbol]
 - 200' FT [Symbol]
 - 200' FT [Symbol]
 - 200' FT [Symbol]
 - 200' FT [Symbol]
 - 200' FT [Symbol]
 - 200' FT [Symbol]
- PANEL 1 PANEL 2
- LEFT LN CLOSED AHEAD
 - LEFT SHOULDER CLOSED
 - SPEEDING FINES DOUBLED WHEN WORKERS PRESENT
 - ROAD WORK AHEAD
 - LEFT LN MERGE RIGHT AHEAD

- LEGEND
- [Red hatched box] = WORK AREA
 - [Orange diamond] = CHANNELIZING DEVICE
 - [Yellow arrow] = ARROW PANEL
 - [White arrow] = LANE IDENTIFICATION
 - [Variable message board icon] = VARIABLE MESSAGE BOARD

MOT provided by:
Bob's BARRICADES, INC.
COMPLETE WORKSITE TRAFFIC CONTROL

PLAN NOT TO SCALE

FDOT CAMERON BERGER

Certificate: 645848
Has Completed a FDOT Approved Temporary Traffic Control: Advanced Course.

Issued: 08/01/2025
Expires: 07/25/2029
Training Provider: A&S Consultants, Inc.
5545 Benchmark Lane
Sanford, FL 32773
Ph: 386-789-9899

Instructor: P M

Verify this Certificate at www.motadmin.com.

REFER TO FDOT INDEX
NUMBERS 102-613 & 102-660

SPEED LIMIT ON
N TAMIAMI TRL IS 40 MPH.

Image Landsat / Copernicus

TEMPORARY TRAFFIC CONTROL SHALL COMPLY WITH THE CURRENT EDITION OF THE FDOT DESIGN STANDARDS (102-600 SERIES INDEX NUMBERS) AND MANUAL ON UNIFORM TRAFFIC CONTROL DEVICES (MUTCD).

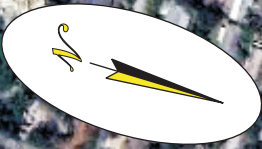


N TAMiami TRl & INDIAN BEACH DR INTERSECTION

PHASE 1 PAGE 2
(FULL DETOUR ROUTE)

SEE PAGE 1 FOR
WORK AREA DETAIL

NORTH TAMiami TRAIL AC WM REPLACEMENT



SEE PAGE 1

TEMPORARY TRAFFIC CONTROL SHALL COMPLY WITH THE CURRENT EDITION OF THE FDOT DESIGN STANDARDS (102-600 SERIES INDEX NUMBERS) AND MANUAL ON UNIFORM TRAFFIC CONTROL DEVICES (MUTCD).

MOT provided by:

 COMPLETE WORKSITE TRAFFIC CONTROL

PLAN NOT TO SCALE



CAMERON BERGER

Certificate:
645848

Has Completed a FDOT Approved Temporary Traffic Control: Advanced Course.

Issued: 08/01/2025

Training Provider:

Expires: 07/25/2029

A&S Consultants, Inc.
5545 Benchmark Lane
Sanford, FL 32773
Ph: 386-788-9899

Instructor: P.M

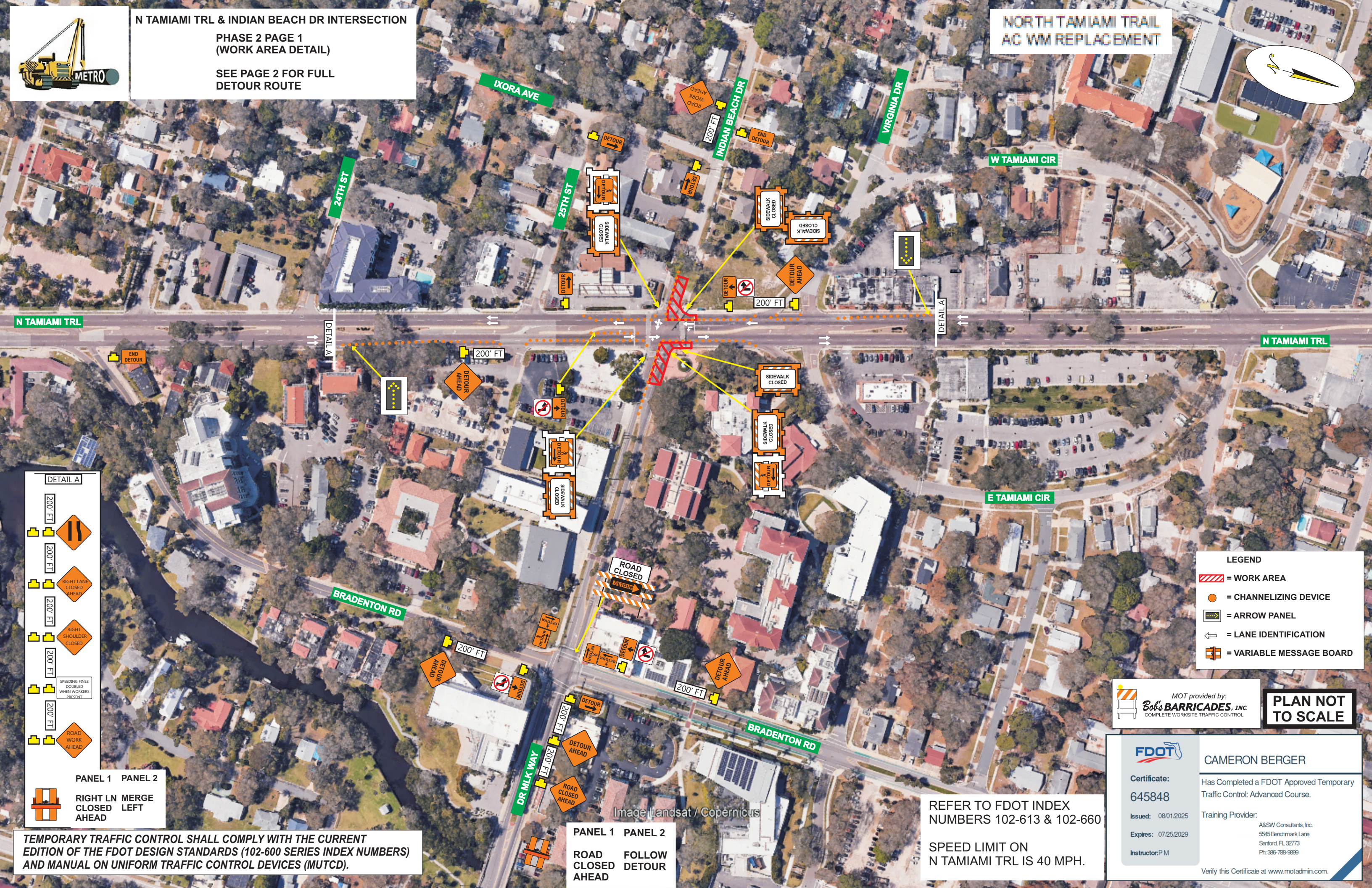
Verify this Certificate at www.motadmin.com.

Image © 2025 Airbus



N TAMiami TRL & INDIAN BEACH DR INTERSECTION
PHASE 2 PAGE 1
(WORK AREA DETAIL)
 SEE PAGE 2 FOR FULL
 DETOUR ROUTE

NORTH TAMiami TRAIL
AC WM REPLACEMENT



DETAIL A

- 200' FT [Sign]
- 200' FT [Sign]
- 200' FT [Sign]
- 200' FT [Sign]
- 200' FT [Sign]
- 200' FT [Sign]
- 200' FT [Sign]
- 200' FT [Sign]

PANEL 1 **PANEL 2**

- [Sign] RIGHT LN MERGE CLOSED AHEAD

LEGEND

- [Red hatched box] = WORK AREA
- [Orange circle] = CHANNELIZING DEVICE
- [Yellow arrow] = ARROW PANEL
- [White arrow] = LANE IDENTIFICATION
- [Orange sign] = VARIABLE MESSAGE BOARD

MOT provided by:
Bob's BARRICADES, INC.
 COMPLETE WORKSITE TRAFFIC CONTROL

PLAN NOT TO SCALE

FDOT

CAMERON BERGER

Certificate: 645848
 Issued: 08/01/2025
 Expires: 07/25/2029
 Instructor: P M

Has Completed a FDOT Approved Temporary Traffic Control: Advanced Course.
 Training Provider: A&S Consultants, Inc.
 5545 Benchmark Lane
 Sanford, FL 32773
 Ph: 386-789-9899

Verify this Certificate at www.motadmin.com.

REFER TO FDOT INDEX
 NUMBERS 102-613 & 102-660

SPEED LIMIT ON
 N TAMiami TRL IS 40 MPH.

TEMPORARY TRAFFIC CONTROL SHALL COMPLY WITH THE CURRENT EDITION OF THE FDOT DESIGN STANDARDS (102-600 SERIES INDEX NUMBERS) AND MANUAL ON UNIFORM TRAFFIC CONTROL DEVICES (MUTCD).

PANEL 1 **PANEL 2**

ROAD CLOSED AHEAD FOLLOW DETOUR AHEAD

Image Landsat / Copernicus



N TAMIAMI TRL & INDIAN BEACH DR INTERSECTION
PHASE 2 PAGE 2
(FULL DETOUR ROUTE)
 SEE PAGE 1 FOR
 WORK AREA DETAIL

NORTH TAMIAMI TRAIL
AC WM REPLACEMENT



SEE PAGE 1

N TAMIAMI TRL

MOT provided by:
Bob's BARRICADES, INC.
 COMPLETE WORKSITE TRAFFIC CONTROL

PLAN NOT TO SCALE



CAMERON BERGER

Certificate:
645848

Has Completed a FDOT Approved Temporary Traffic Control: Advanced Course.

Issued: 08/01/2025

Training Provider:

Expires: 07/25/2029

Instructor: P.M

A&S Consultants, Inc.
 5545 Benchmark Lane
 Sanford, FL 32773
 Ph: 386-788-9899

Verify this Certificate at www.motadmin.com.

TEMPORARY TRAFFIC CONTROL SHALL COMPLY WITH THE CURRENT EDITION OF THE FDOT DESIGN STANDARDS (102-600 SERIES INDEX NUMBERS) AND MANUAL ON UNIFORM TRAFFIC CONTROL DEVICES (MUTCD).

Image © 2025 Airbus