



PHASE 5 (INSIDE LANES)

NORTH TAMiami TRAIL AC WM REPLACEMENT



DETAIL A

- 200 FT [Symbol]
- 200 FT [Symbol]
- 200 FT [Symbol]
- 200 FT [Symbol]
- 200 FT [Symbol]
- 200 FT [Symbol]
- 200 FT [Symbol]

PANEL 1 **PANEL 2**

LEFT LN MERGE
CLOSED RIGHT
AHEAD

LEGEND

- [Symbol] = WORK LIMITS
- [Symbol] = CHANNELIZING DEVICE
- [Symbol] = ARROW PANEL
- [Symbol] = LANE IDENTIFICATION
- [Symbol] = VARIABLE MESSAGE BOARD

REFER TO FDOT INDEX NUMBER 102-613.

SPEED LIMIT ON N TAMiami TRL IS 40 MPH.

MEDIAN TURN LANES TO REMIAN OPEN WHEN NO WORK IS PRESENT.

Image © 2025 Airbus

TEMPORARY TRAFFIC CONTROL SHALL COMPLY WITH THE CURRENT EDITION OF THE FDOT DESIGN STANDARDS (102-600 SERIES INDEX NUMBERS) AND MANUAL ON UNIFORM TRAFFIC CONTROL DEVICES (MUTCD).

MOT provided by:
Bob's BARRICADES, INC.
COMPLETE WORKSITE TRAFFIC CONTROL

PLAN NOT TO SCALE

FDOT CAMERON BERGER

Certificate: 645848
Has Completed a FDOT Approved Temporary Traffic Control: Advanced Course.

Issued: 08/01/2025
Expires: 07/25/2029
Instructor: P.M.

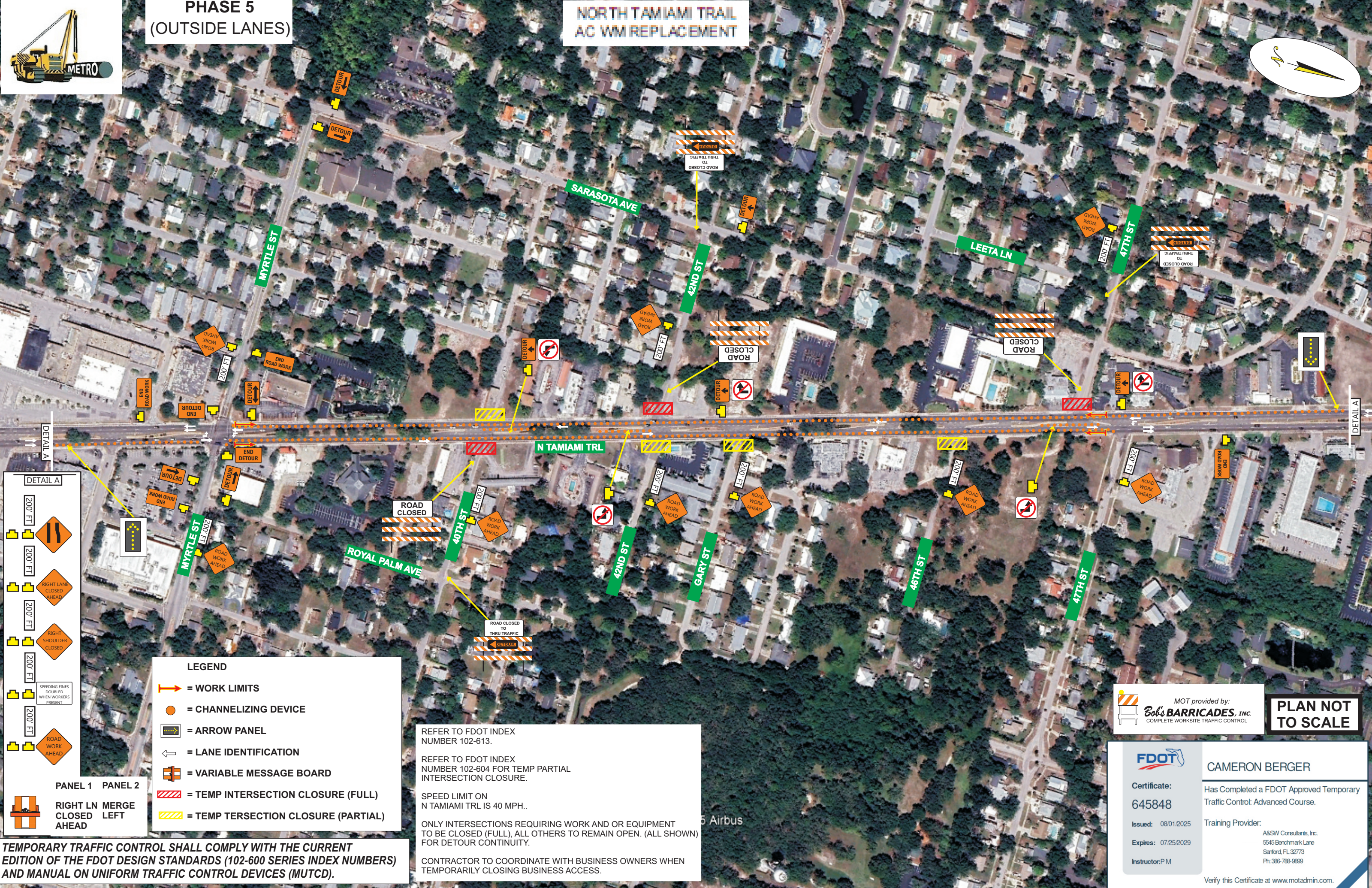
Training Provider:
A&S Consultants, Inc.
5545 Benchmark Lane
Sanford, FL 32773
Ph: 386-788-9899

Verify this Certificate at www.motadmin.com.



PHASE 5 (OUTSIDE LANES)

NORTH TAMiami TRAIL AC WM REPLACEMENT



DETAIL A

200 FT
200 FT
200 FT
200 FT
200 FT

PANEL 1 **PANEL 2**

RIGHT LN MERGE CLOSED LEFT AHEAD

LEGEND

- = WORK LIMITS
- = CHANNELIZING DEVICE
- = ARROW PANEL
- = LANE IDENTIFICATION
- = VARIABLE MESSAGE BOARD
- = TEMP INTERSECTION CLOSURE (FULL)
- = TEMP INTERSECTION CLOSURE (PARTIAL)

REFER TO FDOT INDEX NUMBER 102-613.

REFER TO FDOT INDEX NUMBER 102-604 FOR TEMP PARTIAL INTERSECTION CLOSURE.

SPEED LIMIT ON N TAMiami TRL IS 40 MPH..

ONLY INTERSECTIONS REQUIRING WORK AND OR EQUIPMENT TO BE CLOSED (FULL), ALL OTHERS TO REMAIN OPEN. (ALL SHOWN) FOR DETOUR CONTINUITY.

CONTRACTOR TO COORDINATE WITH BUSINESS OWNERS WHEN TEMPORARILY CLOSING BUSINESS ACCESS.

MOT provided by:
Bob's BARRICADES, INC.
COMPLETE WORKSITE TRAFFIC CONTROL

PLAN NOT TO SCALE

FDOT CAMERON BERGER

Certificate: 645848
Issued: 08/01/2025
Expires: 07/25/2029
Instructor: P M

Has Completed a FDOT Approved Temporary Traffic Control: Advanced Course.
Training Provider: A&S Consultants, Inc.
5545 Benchmark Lane
Sanford, FL 32773
Ph: 386-788-9889

Verify this Certificate at www.motadmin.com.

TEMPORARY TRAFFIC CONTROL SHALL COMPLY WITH THE CURRENT EDITION OF THE FDOT DESIGN STANDARDS (102-600 SERIES INDEX NUMBERS) AND MANUAL ON UNIFORM TRAFFIC CONTROL DEVICES (MUTCD).